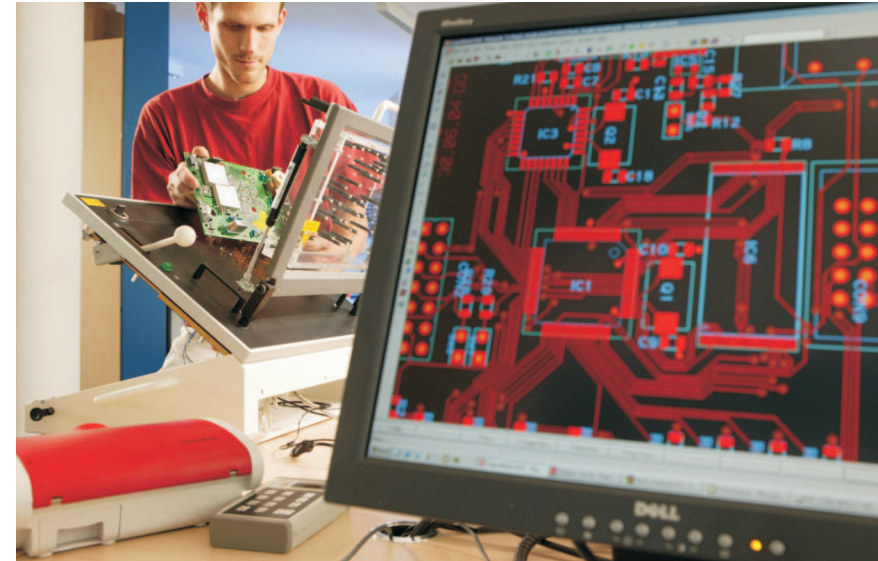


# SERVICES

MEDICAL INNOVATIONS  
CUSTOMIZED TO YOUR NEEDS!



## Approval as a medical product

As a manufacturer of medical products, we are very familiar with the approval conditions for medical products. So that you can completely concentrate on your core competences, we will be happy to be at your side as an expert partner for all approval issues. We will support you in bringing your product to market and will prepare your product for approval on national and international markets. We have already had several products approved for the American market according to 510(k).

## From the pilot run to worldwide shipping

Interdisciplinary and cost-efficient thinking are not only catchwords for us, but are the way we live every day. Thanks to the early inclusion of our production department in the project, products can be developed so they are optimized with respect to manufacturing costs. This leads to enormous cost and time savings in series production. Thanks to our partner network, which has been built up over many years, not only can we meet your individual production requirements, but are also always informed of the newest happenings on the component market, in order to be able to react quickly. If needed, we can deliver your final tested medical product directly to your international customers.

MEDICAL INNOVATIONS  
CUSTOMIZED TO YOUR NEEDS!

# SERVICES



Corscience GmbH & Co. KG is a leading medical engineering company, specializing in the research, development and manufacture of innovative technologies and products in the area of cardiovascular therapy and diagnostics. The company was founded in 2001 by the company Weinmann Geräte für Medizin GmbH & Co. KG and Dr. Armin Bolz. Currently, our interdisciplinary team is made up of 50 experienced specialists from a wide range of backgrounds.

## CONTACT US!

We look forward to speaking to you personally and successfully realizing your medical product.

Our contact people will be happy to help you!

### ADDRESS:

**Corscience GmbH & Co. KG**  
Henkestraße 91  
91052 Erlangen  
Germany

Phone: +49 9131 977986-0

Fax: +49 9131 977986-58

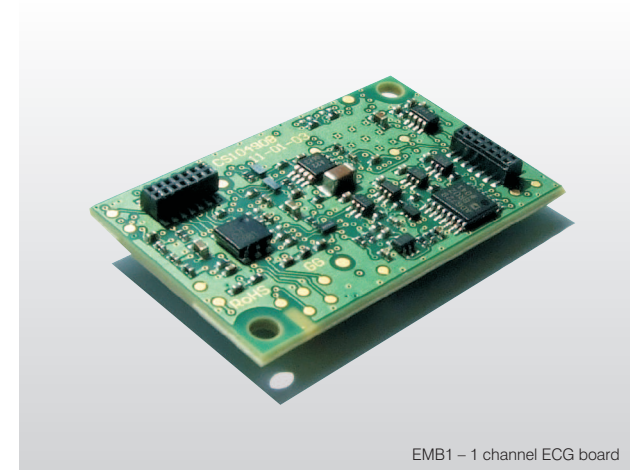
Email: [info@corscience.de](mailto:info@corscience.de)

Internet: [www.corscience.de](http://www.corscience.de)

Every day, both large as well as medium-sized companies are having to face the task of turning new ideas into successful products. At the same time, the challenges to be overcome are often numerous and very different: Project budgets and schedules must be adhered to, interdisciplinary teams must be organized and market demands must be reacted to flexibly. In addition, there is often high innovative pressure and high demand for experts. Plus, right now, in the area of medical engineering, not only must the national standard requirements be met, but increasingly international standard requirements, too. Cooperation with an expert partner is the key to success...



CPR|Check – First aid sensor



EMB1 – 1 channel ECG board

## Corscience will support you in the efficient handling of your projects!

With more than 10 years of experience in the development of medical products and a team of specialists from a wide range of disciplines, we will be at your side, from the first idea to series production. Regardless of whether you would like to have us develop a complete device, or whether you want to purchase OEM modules or be advised by us on approval issues: Corscience stands for qualitative medical engineering at the highest level. Here, good project management is just as important as sound medical-engineering know-how, innovative thinking and constant communication.

## We understand you and your requirements!

Expertise is very important to Corscience. This also applies to our sales and customer support. Due to the technical background of our contact partners, you are well-advised starting from the first conversation. Together, we will develop the solution that best meets your needs. At the same time, our goal is to minimize the project term, save costs, and to establish flexibility and transparency. Thanks to detailed project and cost planning, you will have high planning certainty for your project. Communication and customer contact are important to us, which is why we will constantly keep you informed of the status and progress of your project. With regular strategy meetings, even after the project has been completed, we will ensure a continuous exchange of information and, together with you, will find new trends and opportunities.

## OUR EXPERTISE:

### Electrostimulation:

- e.g. defibrillation, cardioversion, pacing

### Monitoring:

- e.g. multiparameter systems, emergency devices, GUI

### Vital parameter sensor systems:

- e.g. SpO<sub>2</sub>, ECG, EEG, NIBP, temperature, CO<sub>2</sub>

### Wireless technologies

- e.g. Bluetooth, Zigbee, WLAN, ANT+, GPRS, proprietary solutions

### Algorithmics:

- e.g. ECG, defibrillation, plethysmography

### Hardware and software:

- e.g. layout, GUI, FPGA,  $\mu$ C, embedded linux

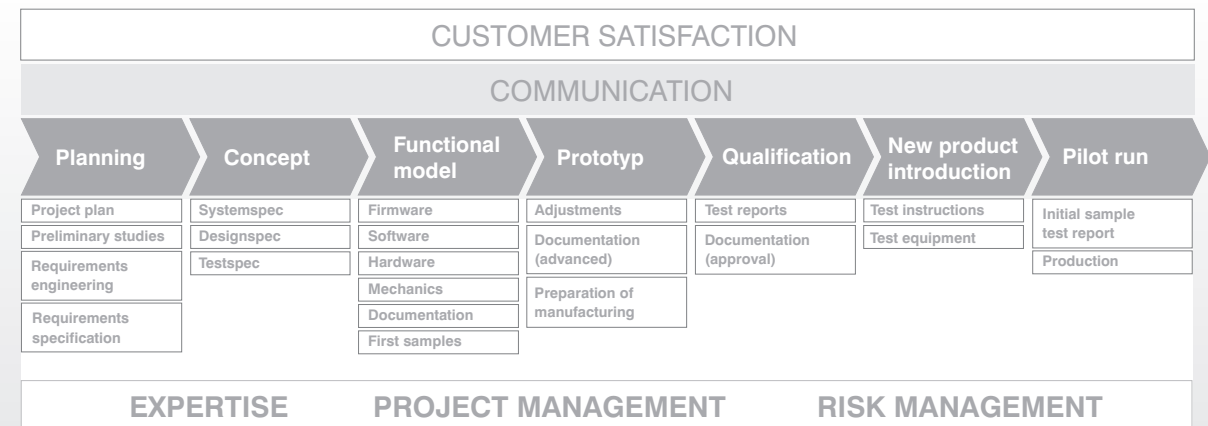
## Risks can be planned and controlled!

As early as the quote phase, we will analyze the potential project risks and will consider the worst case/best case scenario. After all, only those who know the critical path can go alternate ways, if need be. For the actual product, too, we assess risks and follow the risk management process in accordance with DIN EN ISO 14971. Hardware and software modules are classified according to risk, and are continuously assessed during development using FMEAs.

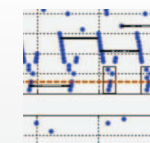
## Professionalism – even during testing!

In order to be able to check whether the requirements have been met at the end of development, it must be clear at the very beginning how they can be tested. Therefore, at Corscience, we draw up test plans and specifications early on. Using a traceability matrix, it can be ensured that all points from the product specification document are tested and the results documented. We place great importance on test automation and the continuous testing of individual modules. This way, errors can be found and rectified early on by means of nightly builds and static code analysis. This saves time during qualification and ensures the product quality.

## OUR DEVELOPMENT PROCESS:

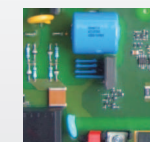


## OUR SERVICES:



### Research:

- Funded projects
- Cooperations
- Universities



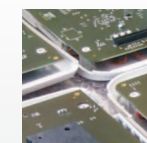
### Development:

- Algorithmics
- Firmware, software
- Hardware, mechanics



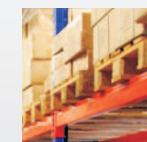
### Approval:

- Consulting, Communication
- Investigation
- Documentation



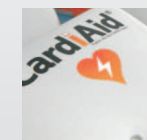
### Production:

- Assembly
- Tests, final testing
- Supply chain management



### Logistics:

- Consignment
- Shipment
- Storage



### Series production:

- Technical support
- Safety check
- Product maintenance